



GENESIS
LC-150S

FDA Class II Medical Device¹

GENESIS
LC-150M

Sitting  Pretty™

Genesis Collection



Pride Mobility® began in 1986 as a lift chair manufacturer exclusively, and the **Genesis Collection** is an ode to our humble origins. Available in small and medium sizes, you'll experience the comfortable Sophie fabric, available in four unique colors – Latte, Sapphire, Shale, and Cabernet. For an additional cost, you can choose our luxurious Lexis Vinyl fabric in Chestnut.

Kick back, relax, and experience total comfort with the Genesis Collection.

PRIDEMOBILITY.COM



Genesis Collection

Model	LC-150S	LC-150M
Size	Small	Medium
User Height	5'3" & under	5'4" - 5'9"
Weight Capacity	325 lbs.	325 lbs.
Seat-to-Floor	18"	20"
Seat Depth	18"	20"
Seat Width	20"	22"
Top of Back to Seat	24"	26"
Fully Padded Chaise	Yes	Yes
Seating Type	Sinous Spring	Sinous Spring
Distance from Wall	17"	18.5"
Overall Width	32"	33"
Total Weight	111 lbs.	116 lbs.
Warranty	2-year Limited	2-year Limited
Position Type	Traditional 3-position	Traditional 3-position

FEATURES

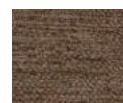
- Hand control with magnetic holder on both sides
- Easy-to-use toggle hand control
- Traditional three-position lift recliner with back and chaise working in tandem
- Integrated battery backup
- Chaise pad design fully supports the legs to eliminate pressure points
- Available in Small and Medium sizes
- Sophie fabrics (Latte, Sapphire, Cabernet, & Shale) and Lexis Vinyl fabric (Chestnut)
- **Small:** 325 lb. capacity / 20" seat width (5'3" height and below recommended)
- **Medium:** 325 lb. capacity / 22" seat width (5'4" to 5'9" height recommended)
- 2-Year Limited Warranty

OPTIONS & ACCESSORIES

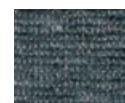
- Lithium battery backup
- Head and arm covers
- Non-skid leg levelers
- Cleaning kit

FABRIC OPTIONS

Sophie Fabrics



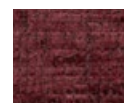
Latte



Sapphire

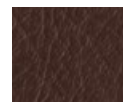


Shale



Cabernet

Lexis Vinyl²



Chestnut



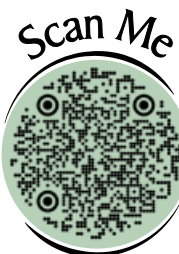
FDA Class II
Medical Device¹

Sitting Pretty™



pridemobility.com

800.800.8586



1) Genesis Collection lift chairs are FDA Class II Medical Devices designed to aid individuals with mobility impairments.

2) Additional charges will apply for this fabric.

NOTE: Measurements may vary +/- 1". The information contained herein is correct at the time of publication; we reserve the right to alter specifications without prior notice.